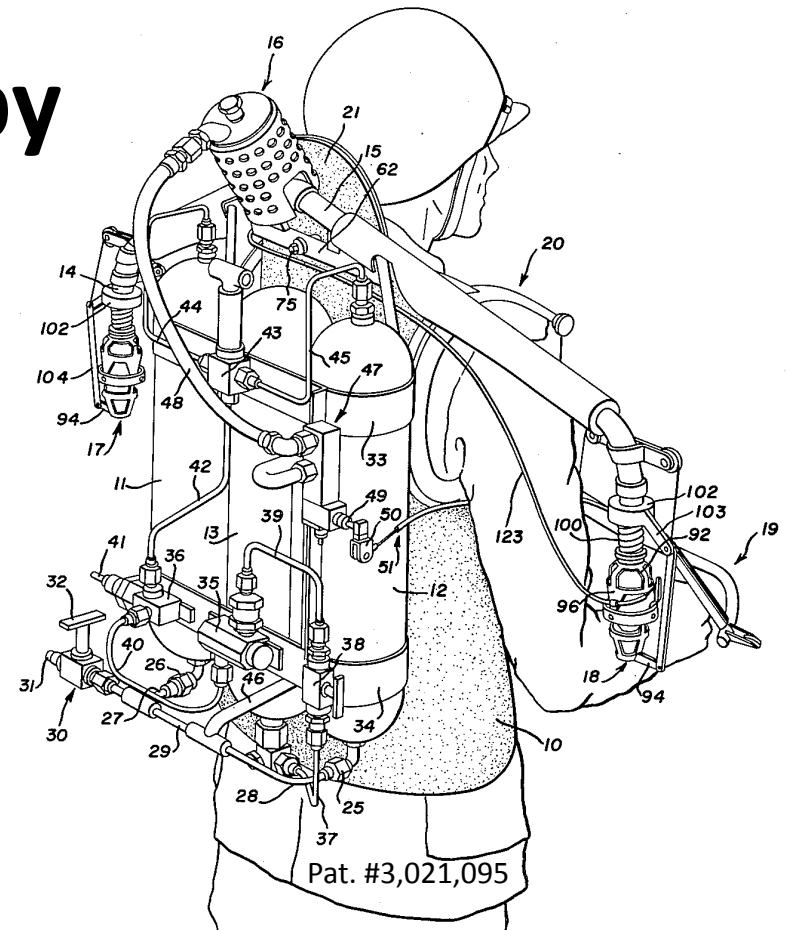


# I Got My Jet Pack... and I'm Still Not Happy



David N. Blank-Edelman  
Director of Technology  
Northeastern University  
College of Computer and Information Science  
BBLISA January 2010

*Tools to Make You More Efficient*

**2nd Edition**  
*Revised & Expanded*



*Automating*

**System  
Administration  
with Perl**

O'REILLY®

*David N. Blank-Edelman*

It is important to pick the  
right metaphor

...for your talk

## The Jetpack: From Comics to a Liftoff in the Yard



Andy Manis for The New York Times

John Schwartz of The New York Times tested a jetpack with its inventor, Glenn Martin, left, and Ray Thomsen guiding him. The device was unveiled Tuesday at an air show in Wisconsin.

By JOHN SCHWARTZ  
Published: July 29, 2008

OSHKOSH, Wis. — To rise off the ground wearing a jetpack is to feel the force of dreams. Very, very noisy dreams.

COMMENTS (81)

SIGN IN TO E-MAIL  
OR SAVE THIS



[Upgrade](#) | [Military & Law Enforcement](#) | [Transportation](#) | [Industry](#) | [Energy Family & Digital Technology](#)

## Jetpack Competitors Start Dogfight With Flashy New Startup

The Martin Jetpack, like the three big rocket belts before it, took off this month in a surge of buzz and headlines. Now other pioneering rocketeers are speaking out for the first time, going so far as to call the new device a "widow maker." Could the new battle finally spell takeoff for this futuristic industry—or just more prolonged promise?

By Erik Sofge

Published on: August 18, 2008

# TAM



# THUNDERBOLT AEROSYSTEMS

# Past work on Interactions

Past work on interactions

# **LEARNING TO TEACH DIAGNOSIS**



# If I Could Talk To The Animals

David N. Blank-Edelman  
Northeastern University CCS  
LISA 2001 Invited Talk

# Should We Ask a Mechanic?

No.

- They can pull parts and put them back in again.
- Their world does not fluctuate as much.
- They have much better instrumentation than we do.



# Should We Ask a Doctor?

Getting warmer, but no.

- Works on the same species.
- Largely has the luxury of communicating directly with the patient for diagnostic information.





# Should We Ask a Veterinarian?

Yes.

- In common:
  - Large variety of different species
  - Can't easily replace parts and have patient live.
  - Diagnostic information comes from a third source.



# How Are Vets Taught?

- 27 accredited schools in the US
- 4 in Canada
- Largely 4 year schools, last year is heavily clinical
- Extremely competitive, rigorous admission standards.
- They are *hard* work after you get in too.

# My “Research”

- I reviewed all the available curricula listings from US schools (~70%)
- I followed up with question to representatives from  $\sim\frac{1}{3}$  of the schools
- Getting hold of veterinarians is hard, getting hold of veterinarians that teach is *very* hard.
- I asked at least these two questions:
  - Where/how do you explicitly teach diagnostic skills?
  - Where/how do you teach about acquisition of diagnostic information from an owner of an animal?

# Example Answers

- Some standard answers:
  - Everywhere and nowhere (you fool)
  - Problem Based Learning
  - Clinical years (rounds, etc)
- Cornell university:
  - Entirely PBL in the 1<sup>st</sup> 2½ years
  - Clinics in the second year sometimes videotaped
  - Community practices service (see healthy animals)
- Iowa State:
  - PBL-hybrid class in 1<sup>st</sup> 4 semesters which includes fake patients with problems
  - Communications skills class taught by counselors, not vets

Past work on interactions

# **IMPROVING INTRA- AND INTER-SPECIES TECHNICAL COMMUNICATION**

# **SysAdmin, Stories and Signing: Learning from Communication Experts**



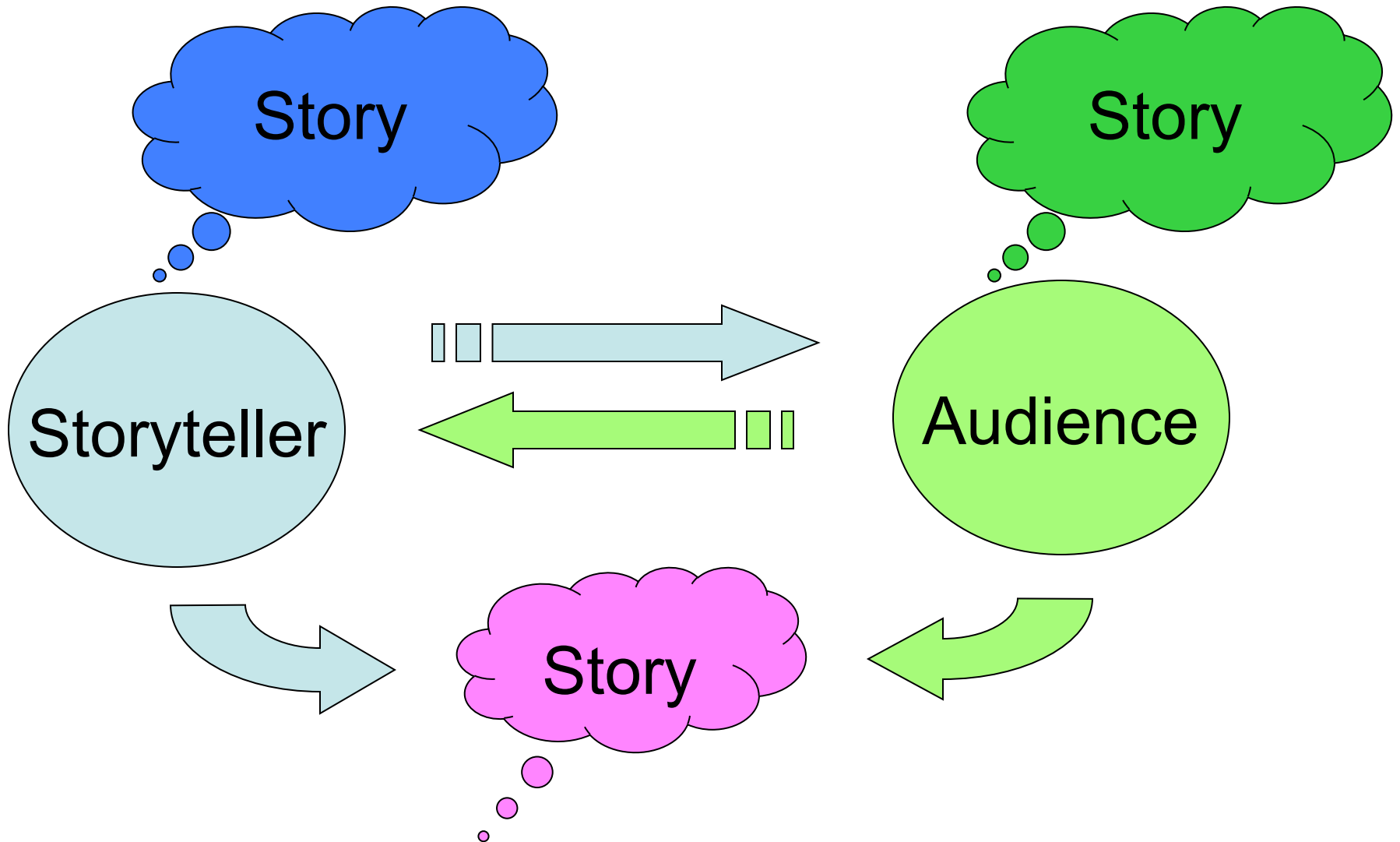
David N. Blank-Edelman  
Northeastern University CCIS  
LISA2002

# Stories are Good for...

- Describing sequential or related events
- Making diverse information coherent
- Being a credible conduit for information
- Passing on lessons or exhortations
  - Frozen stories
  - Stories with a specific lesson/moral
  - Stories with a lesson the listener must find
- Fulfilling a number of social roles:
  - Establishing membership in a community
  - Establishing an individual's identity
  - Establishing a community's identity (shared interpretations)
- Making experience reproducible and reusable (safely)



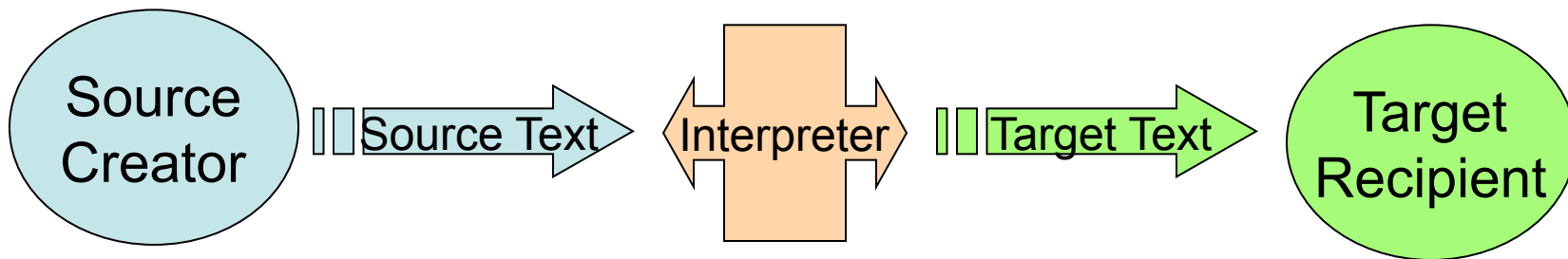
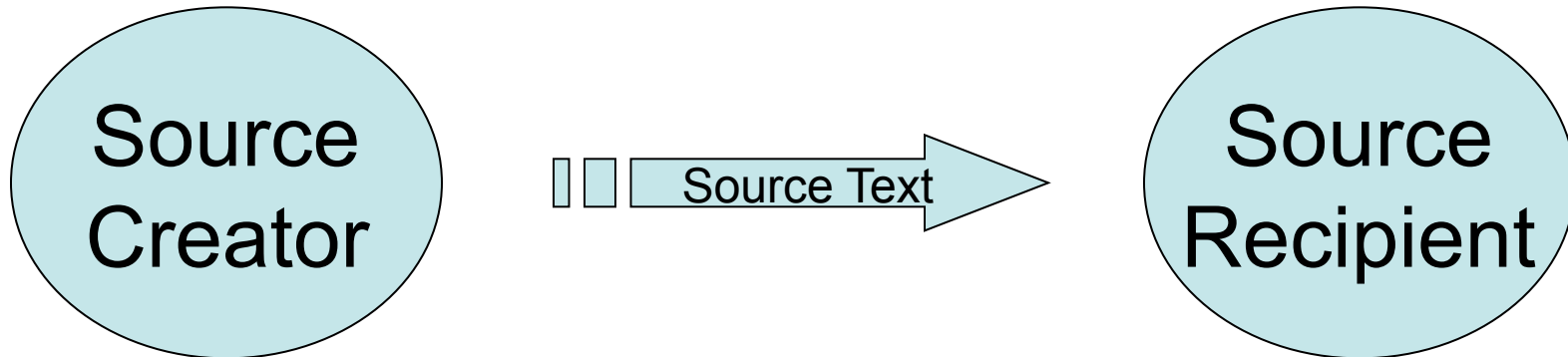
# Storytelling Cosmology



# Nice PowerPoint-fu, but what does it mean?

- This is a real-time process
- You are not the story, but don't isolate it within yourself
- The storyteller creates the story *in the members of the audience*
- Storytelling is a negotiation
  - The storyteller creates and manages a set of expectations
  - You can violate them, but you must do it in a safe way
- The storyteller must honor the two-way contract that has been created

# Interpretation Cosmology



Past work on interactions

# **UNDERSTANDING THE EXTERNAL PERCEPTION OF SYSTEM ADMINISTRATORS**

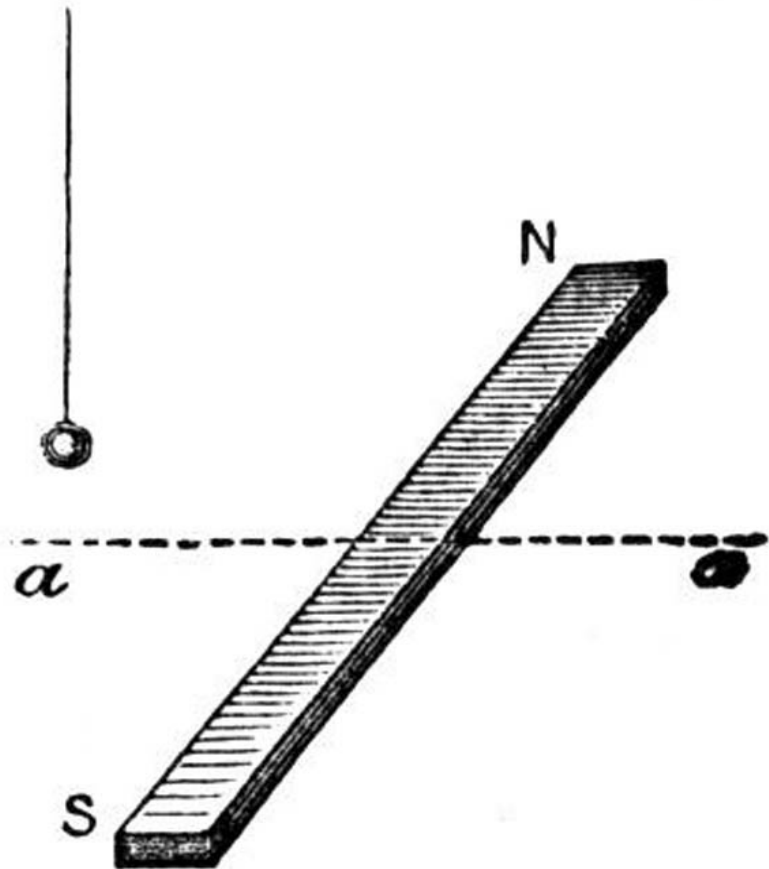
# Through the Lens Geekly: How SysAdmins Are Portrayed in Pop Culture

David N. Blank-Edelman  
Northeastern University CCIS  
LISA 2003



# The Three Stereotype Polarities

- Competence
- Morality
- Hipness



Past work on interactions

# **EXPLORING THE DEBUGGING PROCESS FOR COMPLEX SYSTEMS**



# System Administration and Sex Therapy:

*The Gentle Art of Debugging*

David N. Blank-Edelman  
Northeastern University CCIS  
LISA 2004



# Why SysAdmin & Sex Therapy?

- Draws a crowd, no?
- Our debugging tasks are getting harder
- Debugging is not just binary
- Two fields share a few things in common:
  - complex systems without authorship or control
  - “Should just work”



# Our Debugging Tasks are Getting Harder

- Tendency towards complex and distributed dependency
- Don't control all of the parts and we haven't written all of the software
- Source code availability increasing...but the level it helps is decreasing



# Sex Should “Just Work”

1. All other couples have sexual intercourse several times a week.
2. Sex for all other couples includes orgasm on every occasion.
3. All other couples are able to obtain orgasm simultaneously.
4. If sex is not good then there must be something wrong with the relationship generally.
5. Partners should instinctively know what type of stimulation their partner needs.
6. If a partner does not respond sexually to his/her partner then he/she does not find the partner sexually attractive.

(Spence, 1991)

Past work in interactions

**DOCUMENTING COMPLEX  
MULTIVARIATE PROCESSES SO NOVICES  
CAN REPEAT THEM**

**+**

**PERFECT AND CONTINUOUS  
FUNCTIONING IN HIGH-PRESSURE  
TEAM SITUATIONS**



# Cookin' at the Keyboard



David N. Blank-Edelman  
Northeastern University

with

Lee Damon  
University of Washington

# Why Cooking is Hard

"To make a fine sauce, you can't just follow the recipe exactly, it's never exactly the same, so you always have to adjust. But that takes experience," he says.

"Do you need to add a touch of port to it, add a few more beets to the Bordelaise, reduce it down a bit to achieve a deeper, richer color? There are different things you need to adjust each time to make a sauce consistent. *You don't achieve consistency just by doing it the same way every time.*"

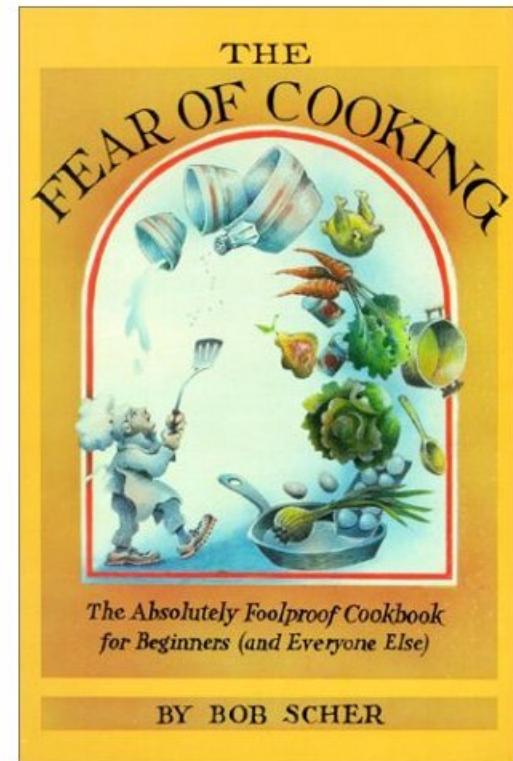
—Terrance Brennan in *Culinary Artistry* (emphasis mine)



# Why Cooking is Hard

(Bob Scher)

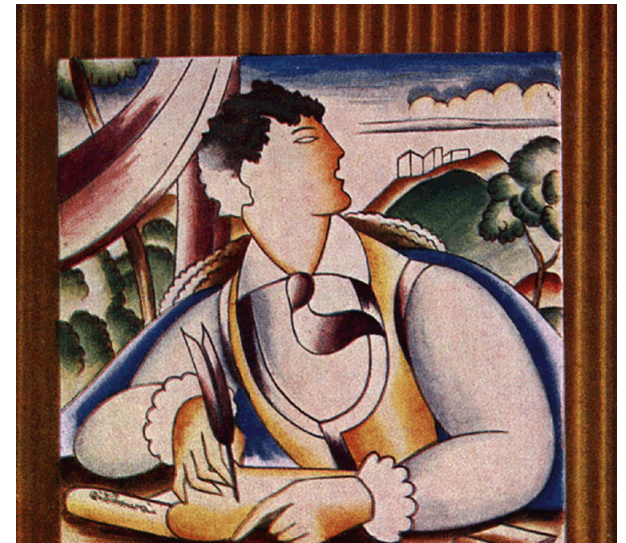
- You aren't cooking.
  - At best, managing the conditions
- Number of variables are huge:
  - the weather, the season, the cook's disposition and mood, the quality and state of the ingredients, the equipment, altitude, etc.
- Cooking is very rarely a linear process.



# Why Writing about Cooking is Harder

(Lorna Sass)

- You never make the same food twice.
- Really describing how to make a dish would scare readers.
- People no longer use common sense when cooking so you have to be more precise.
- Hard to write good instructions (requires repeated crossing of left/right brain divide).



# Testing Recipes (the ATK Way)

1. Research, yield 5-7 recipes
2. Kitchen test all recipes to determine variables, important attributes, goals
3. Start to test each variable, one at a time (several weeks, 40-50 tests)
4. Find final candidate, approved by Test Kitchen director
5. Sent out to professional recipe tester, writes up formal report
6. Sent to “friends of Cooks” (1000-2000 people, 50-200 responses), sent back to #3?

# What Do You Need to Be A Line Cook in Their Kitchen?

- Chef McClelland adds:
  - Focus
  - Dedication to craft/willingness to succeed in environment
  - Accepting the contract: will be professional, will chase perfection on a daily basis
  - Willingness to realize not an individual, work in unison/rhythms
  - Willingness to jump in to help
  - Ability to receive new information and produce with it



# *Mise En Place*

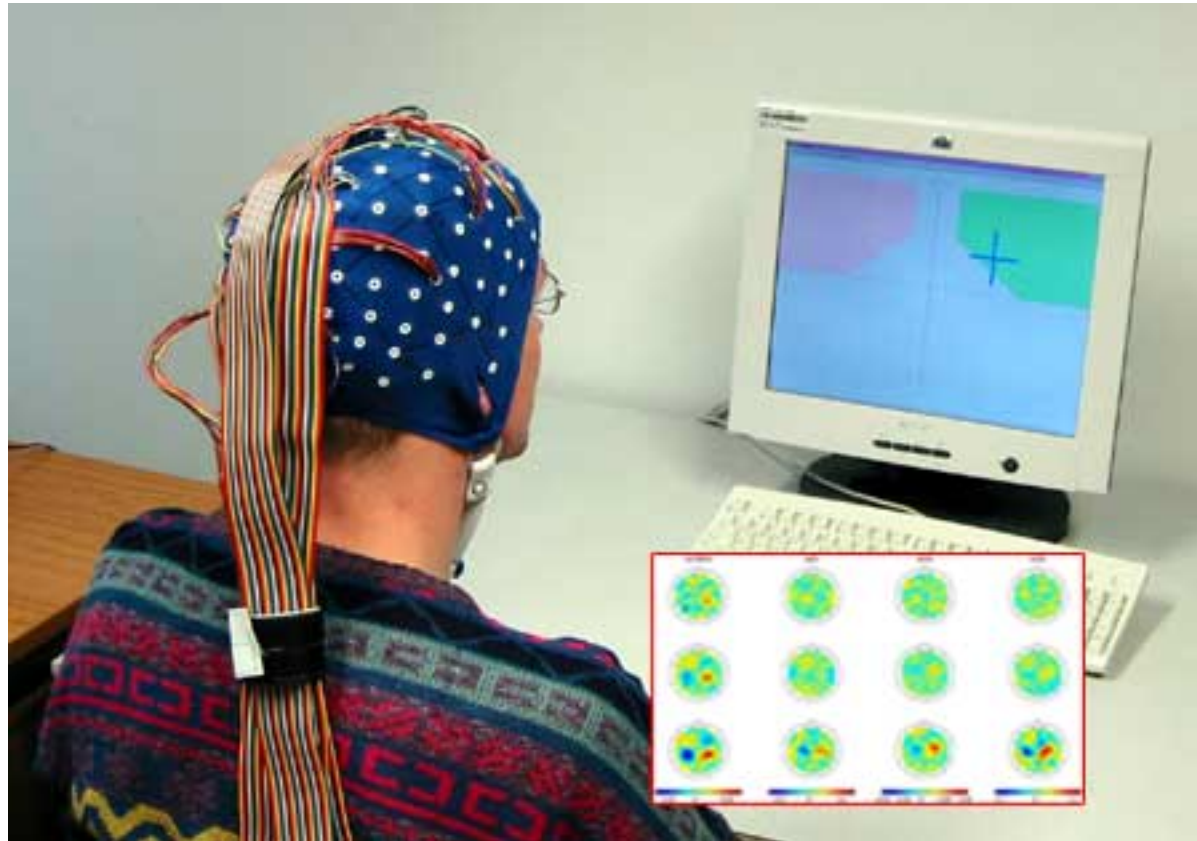
“Everything in place”

- Physical
  - All food prepared and ready to cook
  - All sauces and garnishes
  - Cooking foods (oils, salts, etc)
  - Utensils/Equipment
  - Towels
- Arrangement
- Lynch: no cutting during service, only one slicing thing out if it is called for
- Team prepared at No.9 Park and L’Espalier, special highly trained chefs all day at L’Espalier

# Working Clean

- McClelland: Clean as you go. Clean between tasks. Keeping yourself (apron, floor, cutting boards/knives) clean.
- Lynch: Start project, finish project (total focus).
- Why?
  - Clears your brain
  - Helps prepare for next task, clearing out the last
  - You are “working organized”
  - Ultimately saves time
- Bourdain recalls...

# Interfaces





## Computer Randomly Plays Classical Music

View products that this article applies to.

This article was previously published under Q261186

Article ID	: 261186
Last Review	: March 27, 2007
Revision	: 3.3

### SUMMARY

During normal operation or in Safe mode, your computer may play "Für Elise" or "It's a Small, Small World" seemingly at random. This is an indication sent to the PC speaker from the computer's BIOS that the CPU fan is failing or has failed, or that the power supply voltages have drifted out of tolerance. This is a design feature of a detection circuit and system BIOSes developed by Award/Unicore from 1997 on.

### MORE INFORMATION

Although these symptoms may appear to be virus-like, they are the result of an electronic hardware monitoring component of the motherboard and BIOS. You may want to have your computer checked or serviced.

For additional related information, please see the following DFI Technologies Web site:

<http://www.dfiusa.com/support/tech-support.html>

Microsoft provides third-party contact information to help you find technical support. This contact information may change without notice. Microsoft does not guarantee the accuracy of this third-party contact information.

### APPLIES TO

- Microsoft Windows 2000 Server
- Microsoft Windows 2000 Professional Edition
- Microsoft Windows 95
- Microsoft Windows 98 Standard Edition
- Microsoft Windows 98 Second Edition
- Microsoft Windows NT Server 4.0 Standard Edition

[↑ Back to the top](#)

**Keywords:** kbhardware kbinfo KB261186

### Article Translation

Arabic

### Related Support

- [Windows 2000](#)
- [Windows 98](#)

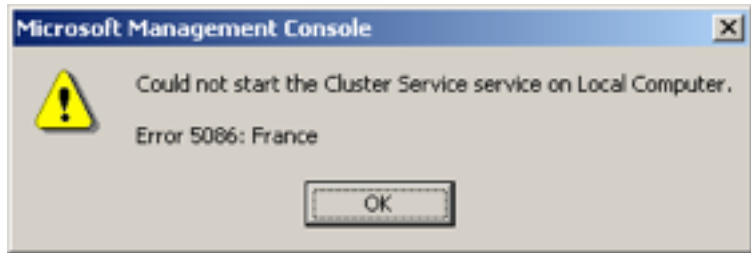
### Other Support O

- [Need More Help?](#)  
Contact a Support professional by Online or Phone
- [Customer Service](#)  
For non-technical assistance with purchases, subscriptions, services, even training courses, corporate sales issues, and more
- [Newsgroups](#)  
Pose a question to users. Discuss groups and Forums about specific products, technologies, and services.

### Page Tools

- [Print this page](#)
- [E-mail this page](#)







# chromium

An open-source browser project to help move the web forward.

Search projects

[Project Home](#)   [Downloads](#)   [Wiki](#)   [Issues](#)

[New issue](#) | Search  for   |

[Advanced search](#) | [Search tips](#)

☆ **Issue 31482: Huge amount of goats teleported**   [◀ Prev](#) 1059 of 9781 [Next ▶](#)

51 people starred this issue and may be notified of changes.   [Back to list](#)

**Status:** Unconfirmed

**Owner:** [ben@chromium.org](mailto:ben@chromium.org)

**Cc:** [phajdan...@chromium.org](mailto:phajdan...@chromium.org),  
[mdm@chromium.org](mailto:mdm@chromium.org)

**Type-Bug**

**Pri-2**

**Area-Undefined**

**Mstone-5**

[Add a comment below](#)

Reported by [hidden.node](#), Jan 03, 2010

Chrome Version : Google Chrome 4.0.266.0 (Official Build 33992)

**URLs (if applicable) :**

**Other browsers tested:**

**Add OK or FAIL after other browsers where you have tested this issue:**

Safari 4: OK

Firefox 3.x: OK

IE 7: OK

IE 8: OK

**What steps will reproduce the problem?**

1. Shift+Esc
2. Right click on any process
3. Select "Goats teleported"





**What is the expected result?**

I expected Google Chrome to teleport maybe three, maximum five goats!

**What happens instead?**

About  $3 \cdot 10^6$  goats get teleported! I won't be able to pay for teleportation of such huge amount of goats!

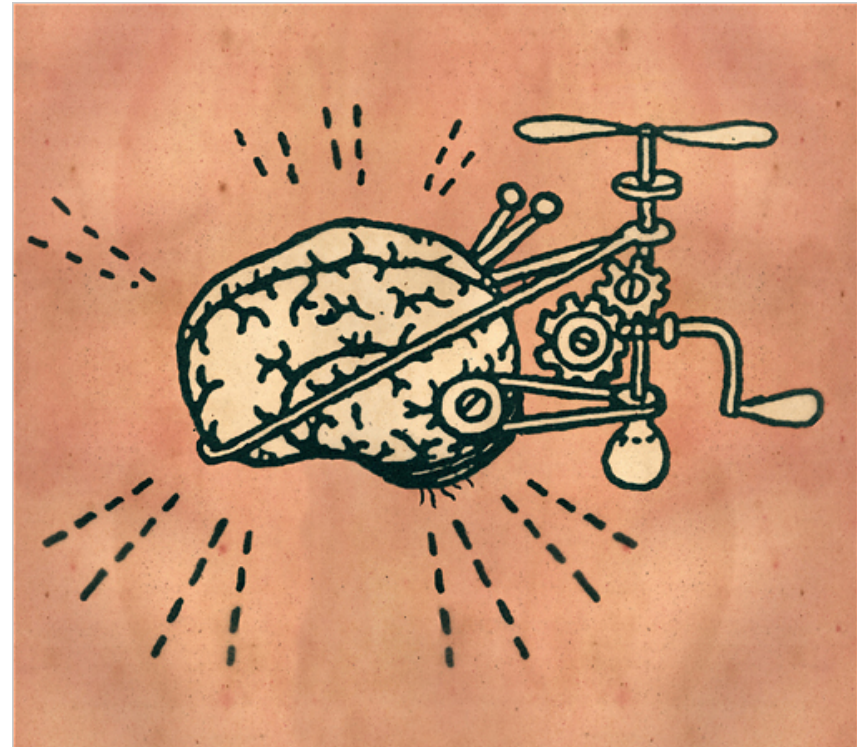
Task Manager - Google Chrome

Page	Memory	CPU	Network	Process ID	Goats Teleported
 Browser	14,372K	0	N/A	3924	3,376,360
 Tab: Teh Forum	18,848K	0	0	2880	3,406,663
 Tab: Teh Forum			0		3,412,887
 Plug-in: Shockwa...	10,620K	0	N/A	2144	3,423,895

[Stats for nerds](#) End process

# Why is SysAdmin Hard (meta)

- Translation between vague human needs and the tech world
- People-Machine boundary
  - Make people more like machines
  - Make machines more like people



Prediction: The CAPTCHA spam arms race will lead to the creation of A.I.

Are you human? Please answer this question:

~~DESCRIBE~~ what *LOVE*  
*feels* like ~~IN 200~~ words.

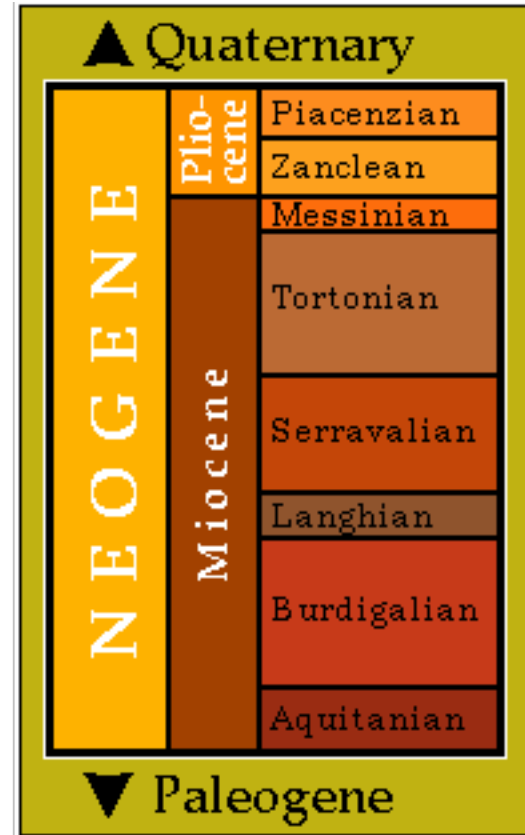
# What Are We Up Against Now

- Human Weaknesses
  - Memory
  - Complexity
  - Systems understanding (mental modeling)
  - Communication
  - Slant



# Epochs

- CLI
- GUI
- Automation
- Config mgmt



# Command line

- Information sparse
- Leads to:
  - Terse and “efficient” communication
  - Mental vs. visual abstraction (regexp, globbing)
  - Leveragable/building block work
  - Specific learning curve with very few affordances
  - High accessibility
- Very small experiential difference between user and system administrator
- Most sysadmins dig this approach



```
tc qdisc del dev $ETH root 2>&1 > /dev/  
null
```

```
tc qdisc add dev $ETH root handle 1: htb  
default 2
```

```
tc class add dev $ETH parent 1: classid  
1:1 htb rate 1000mbit
```

```
tc class add dev $ETH parent 1: classid  
1:2 htb rate ${RESTRICTMEGABITS}mbit
```

```
tc filter add dev $ETH protocol ip parent  
1: prio 1 u32 match ip dst 129.10.0.0/16  
flowid 1:1
```

```
tc filter add dev $ETH protocol ip parent  
1: prio 1 u32 match ip dst 155.33.0.0/16  
flowid 1:1
```

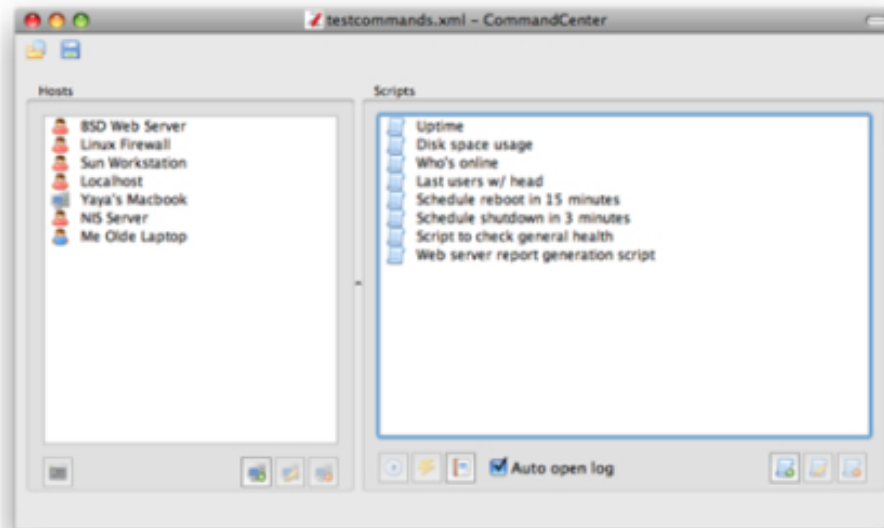
From: "MacZOT Team support-at-maczot.com IMacZot!" <jek5ji6yei0t@sneakemail.com>  
Subject: **CommandCenter - System Administration Made Easy!**  
Date: August 27, 2008 3:02:11 AM EDT  
To: dnb@ccs.neu.edu  
Reply-To: "support-at-maczot.com IMacZot!" <jek5ji6yei0t@sneakemail.com>

# macZOT!

TODAY CONTACT FAQ MY ACCOUNT

## CommandCenter 1.0.9

Scripts Unlimited



[Did you win today?](#)



[Try](#) [Buy](#)

Retail Price: \$ 29.95

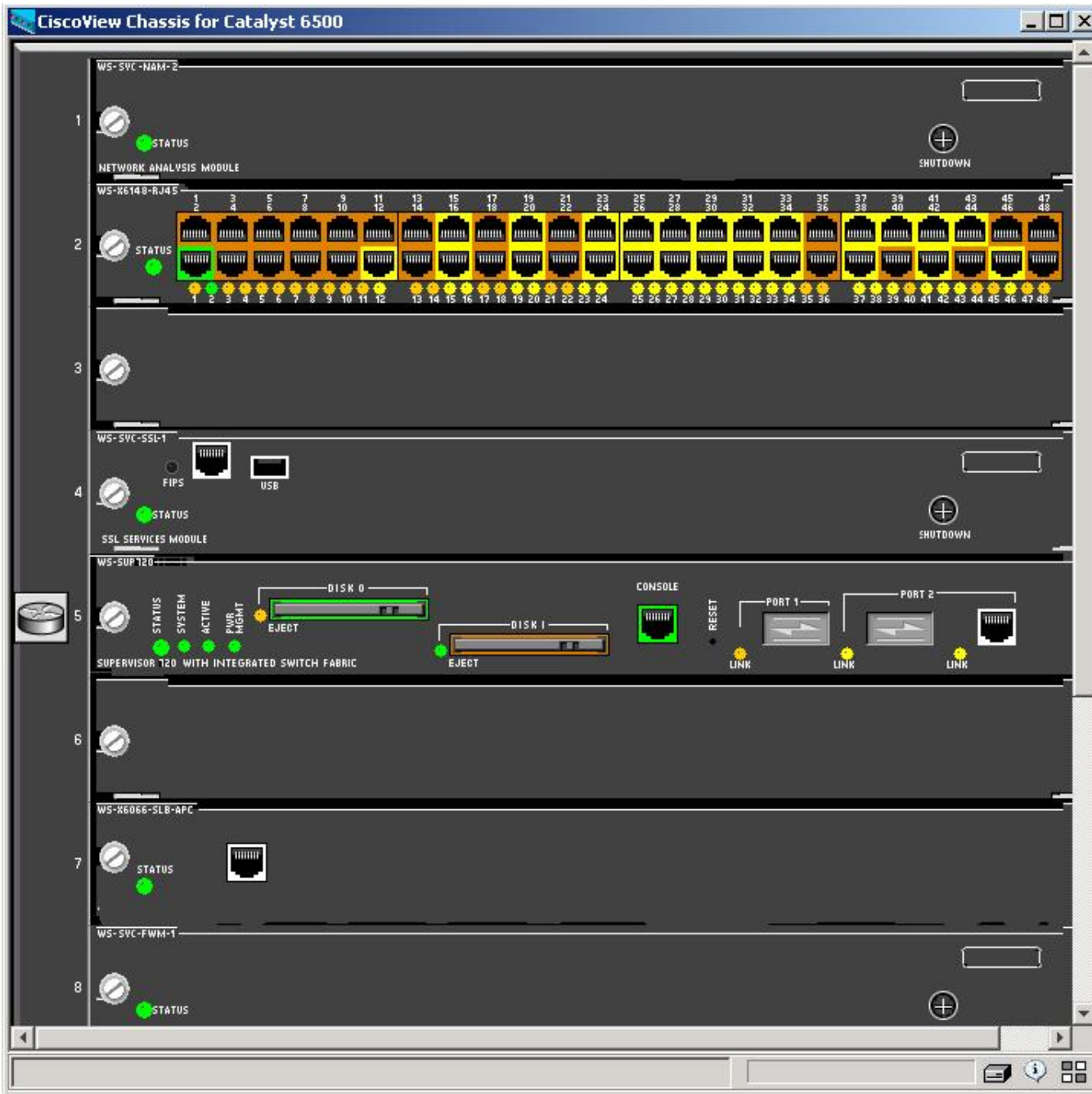
ZOT Price: \$ 18.00

**Save: 40% Now**

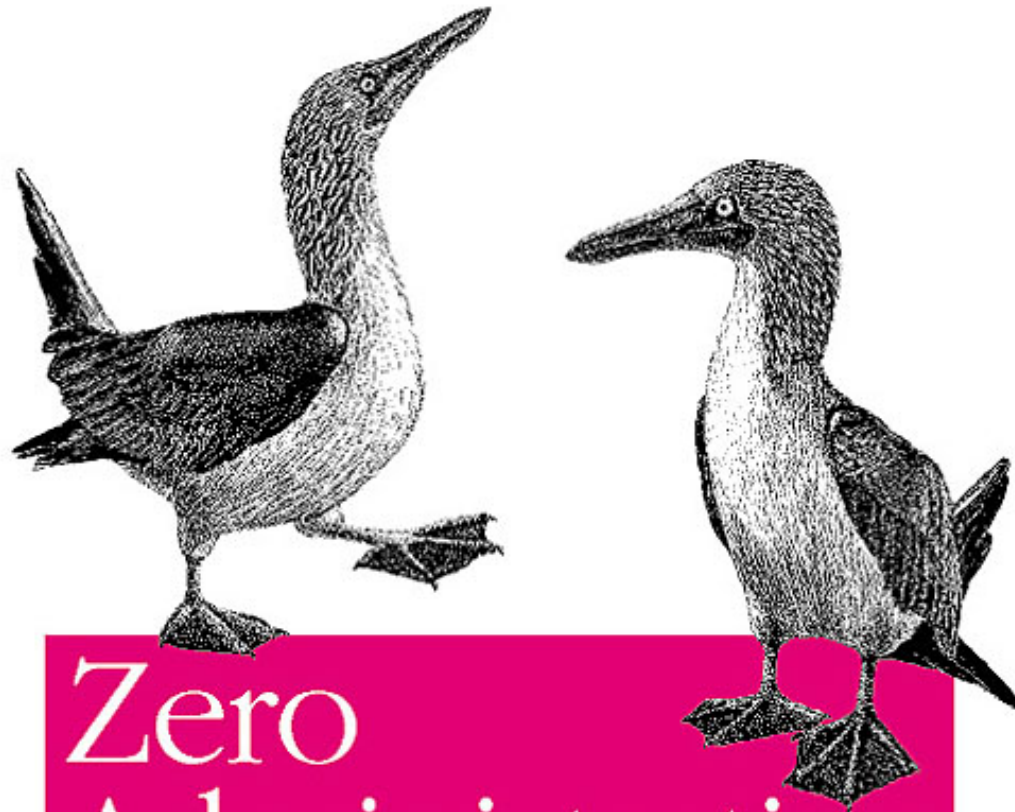
# GUI

- Move from one kind of abstraction to another
- Stick with examples from my history
- Not going to do an extensive historical survey
- Evolution





*Vital Assistance for System Administrators*

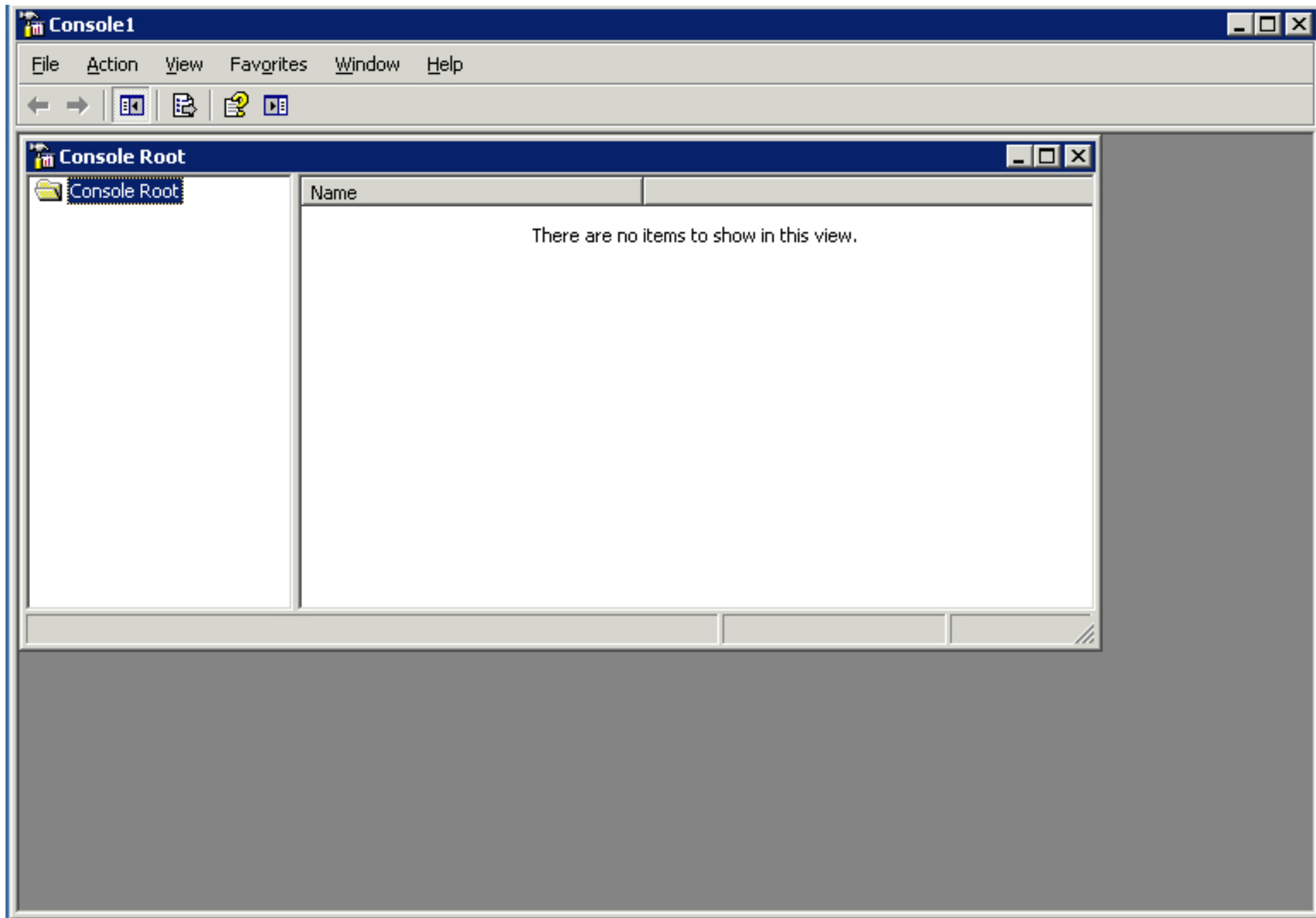


# Zero Administration

*for Windows*

O'REILLY™

*Craig Zacker*



dnsmgmt - [DNS\GONDOR\Forward Lookup Zones]

File Action View Window Help

DNS  
GONDOR  
Forward Lookup Zones  
Reverse Lookup Zones  
Event Viewer

Forward Lookup Zones 2 zone(s)

Name	Type	Status
ccis-windows.ccs.neu.edu	Active Direct...	Running
development.ccs.neu.edu	Secondary	Running

**Active Directory Users and Computers**

File Action View Window Help

Active Directory Users and Computers

- ccis-windows.ccs.neu.edu
  - admin\_groups
  - asp\_users
  - Builtin
  - ccis\_computers
  - ccis\_groups
  - ccis\_users
  - Computers
  - courses
  - defaultMigrationContainer
  - Domain Controllers
  - expired\_users
  - ForeignSecurityPrincipals
  - LostAndFound
  - NetApp
  - NTDS Quotas
  - people
  - Program Data
  - softgrid\_groups
  - softgrid\_users
  - Speciality Users

**System** 28 objects

Name	Type	Description
AdminSDHolder	Container	
ComPartitions	Container	
ComPartitionSets	Container	
Default Domain Policy	Domain Policy	
Dfs-Configuration	dfsConfiguration	
DomainUpdates	Container	
File Replication Service	FRS Settings	
FileLinks	fileLinkTracking	
IP Security	Container	
Meetings	Container	
MicrosoftDNS	Container	
Password Settings Conta...	msDS-Password...	
Policies	Container	
RAS and IAS Servers Ac...	Container	
RpcServices	RPC Services	
System Management	Container	
WinsockServices	Container	
WMIPolicy	Container	
BCKUPKEY_16d3e410-65...	secret	
BCKUPKEY_c3d009ce-95...	secret	



Default Domain Controller Security Settings

File Action View Help

← → [Home] [Back] [Forward] [Refresh] [Help] [Print]

Security Settings	Name	Description
[-] Account Policies	Account Policies	Password and account lockout policies
[-] Password Policy	Local Policies	Auditing, user rights and security options policies
[-] Account Lockout Policy	Event Log	Event Log
[-] Kerberos Policy	Restricted Groups	Restricted Groups
[-] Local Policies	System Services	System service settings
[-] Audit Policy	Registry	Registry security settings
[-] User Rights Assignment	File System	File security settings
[-] Security Options	Wireless Network (IEEE 802.1...)	Wireless Network Policy Administration. Manage th...
[-] Event Log	Public Key Policies	
[-] Restricted Groups	Software Restriction Policies	
[-] System Services	IP Security Policies on Active ...	Internet Protocol Security (IPSec) Administration. ...
[-] Registry		
[-] File System		
[-] Wireless Network (IEEE 802.11) F		
[-] Public Key Policies		
[-] Encrypting File System		
[-] Automatic Certificate Reques		
[-] Trusted Root Certification Au		
[-] Enterprise Trust		
[-] Software Restriction Policies		
[-] IP Security Policies on Active Dire		

**Local Security Policy**

File Action View Help

← → [Icons]

**Security Settings**

- Account Policies
  - Password Policy
  - Account Lockout Policy
  - Kerberos Policy
- Local Policies
  - Audit Policy
  - User Rights Assignment
  - Security Options
- Windows Firewall with Advanced Security
  - Windows Firewall with Advanced Sec
- Network List Manager Policies
- Public Key Policies
  - Encrypting File System
  - Software Restriction Policies
  - IP Security Policies on Local Computer

Name	Description
Account Policies	Password and account lockout policies
Local Policies	Auditing, user rights and security options policies
Windows Firewall with Advanc...	Windows Firewall with Advanced Security
Network List Manager Policies	Network name, icon and location group policies.
Public Key Policies	
Software Restriction Policies	
IP Security Policies on Local C...	Internet Protocol Security (IPsec) Administration. ...

- Login: screenshots
- Webmin
- System
  - Bootup and Shutdown
  - Change Passwords
  - Disk Quotas
  - Disk and Network Filesystem
  - Filesystem Backup
  - LDAP Client
  - LDAP Users and Groups
  - Log File Rotation
  - MIME Type Programs
  - MON Service Monitor
  - PAM Authentication
  - Running Processes
  - Scheduled Commands
  - Scheduled Cron Jobs
  - Security Sentries
  - Software Packages
  - SysV Init Configuration
  - System Documentation
  - System Logs
  - System Logs NG
  - Users and Groups
- Servers
- Networking
- Hardware
- Cluster
- Others
- System Information
- Logout

[Module Index](#)  
[Help..](#)

## Add New Backup

### TAR filesystem backup details

**Backup format** Unix TAR

**Directories to backup**

**Backup to**

File or tape device

Host  as user  in file or device

**Remote backup command**

Default (RSH)  SSH  FTP

**Password for SSH/FTP login**

### Backup options

**Backup label**

**Tape size**  Work out automatically   kB

**Compress archive?**  **Split across multiple files?**  Yes  No

**Follow symbolic links?**  Yes  No **Limit backup to one filesystem?**  Yes  No

**Prompt for new tape if needed?**  Yes  No **Remount with noatime option during backup?**  Yes  No

**Path to rmt on remote system**  Default

**Attempt test restore after backup to verify?**  Yes  No

**Extra command-line parameters**

**Command to run before backup**

**Command to run after backup**

### Backup schedule

**Scheduled backup enabled?**  Disabled

Enabled, after:

Enabled, at times chosen below..

**Email scheduled output to**

**Email message subject**  Default

Simple schedule ..   Times and dates selected below ..

Minutes	Hours	Days	Months	Weekdays
<input type="text" value=""/>	<input type="text" value=""/>	<input type="text" value=""/>	<input type="text" value=""/>	<input type="text" value=""/>

Done

# Automation

- (current) GUIs do a bad job with:
  - Collections and Selection
  - Repetition
  - Specifying complex actions
- Scripting languages
- Knit together tools
- Fairly mature
- Powershell

*Tools to Make You More Efficient*

**2nd Edition**  
*Revised & Expanded*



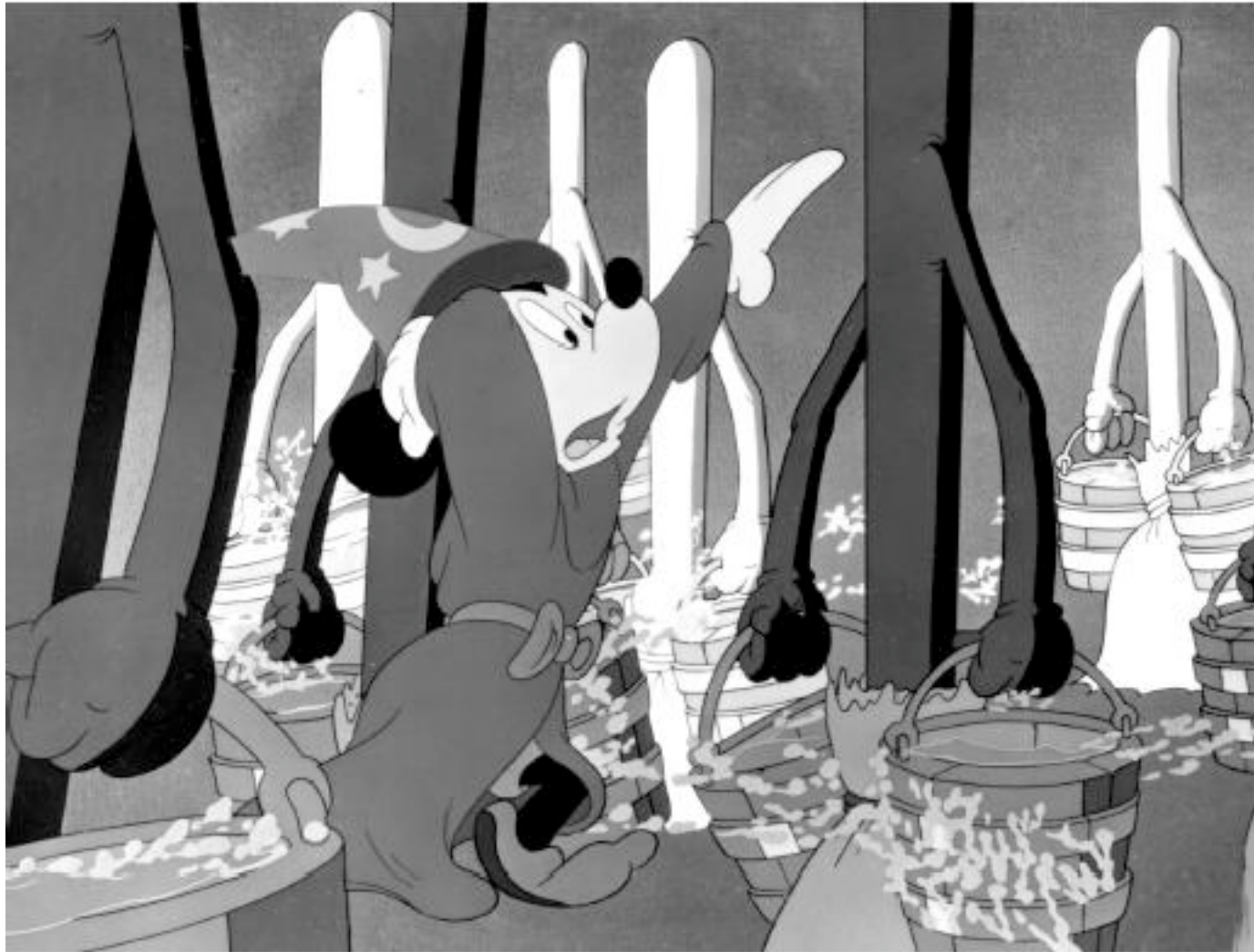
*Automating*

# System Administration with Perl

O'REILLY®

*David N. Blank-Edelman*

# Perils of Automation



# Configuration Management

- Next step up is config management
- Still working out what this means (host, network, router, package, abstraction...)
- Acknowledge need to get away from low level in order to scale
- Maybe toddler age
- Next wave? Autonomic computing?

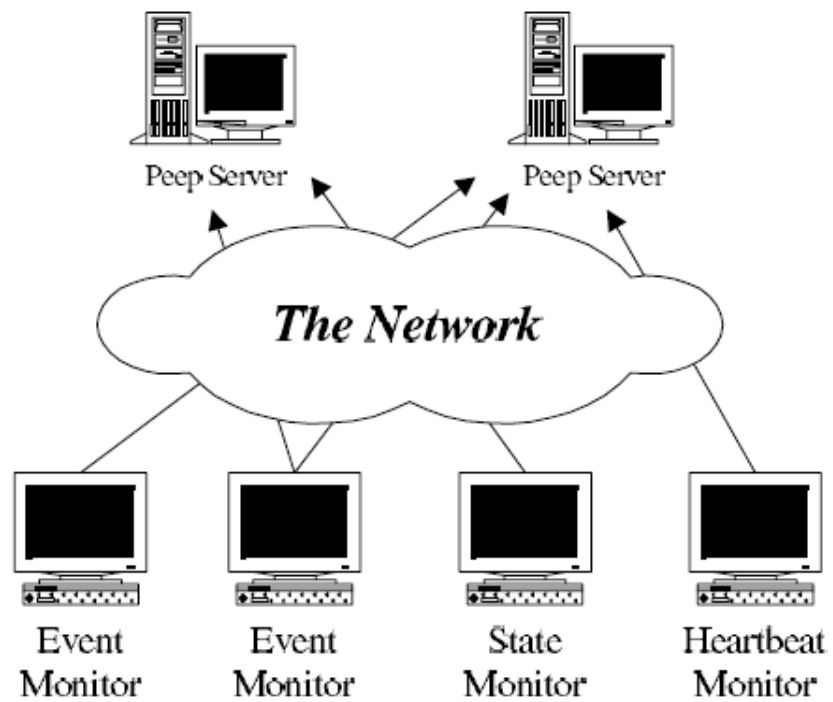


Figure 1: The Peep architecture.





# Two New Interesting Interfaces

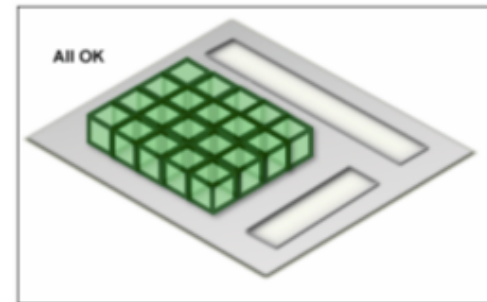
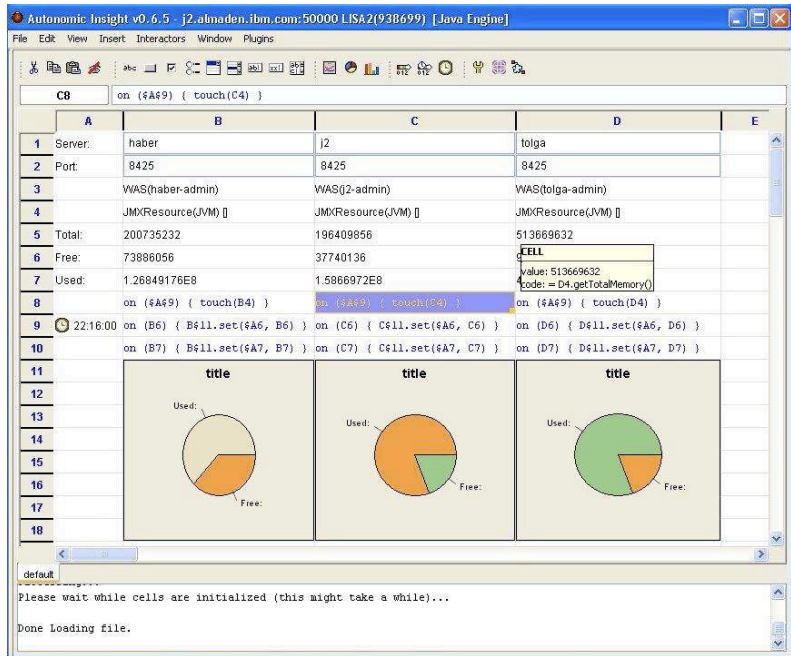


Figure 4: No Problems in the System

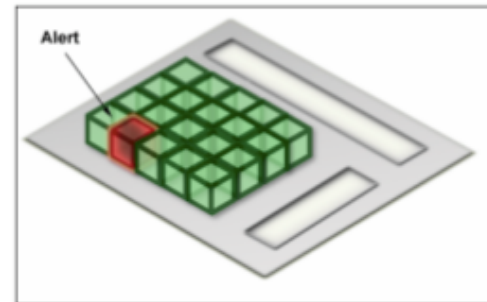


Figure 5: Alert in Site B

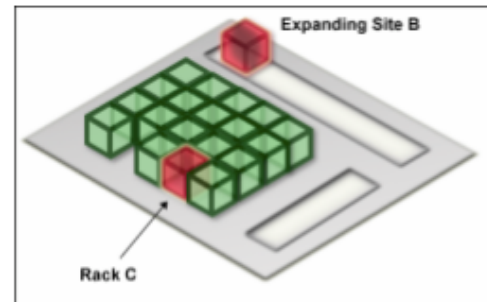
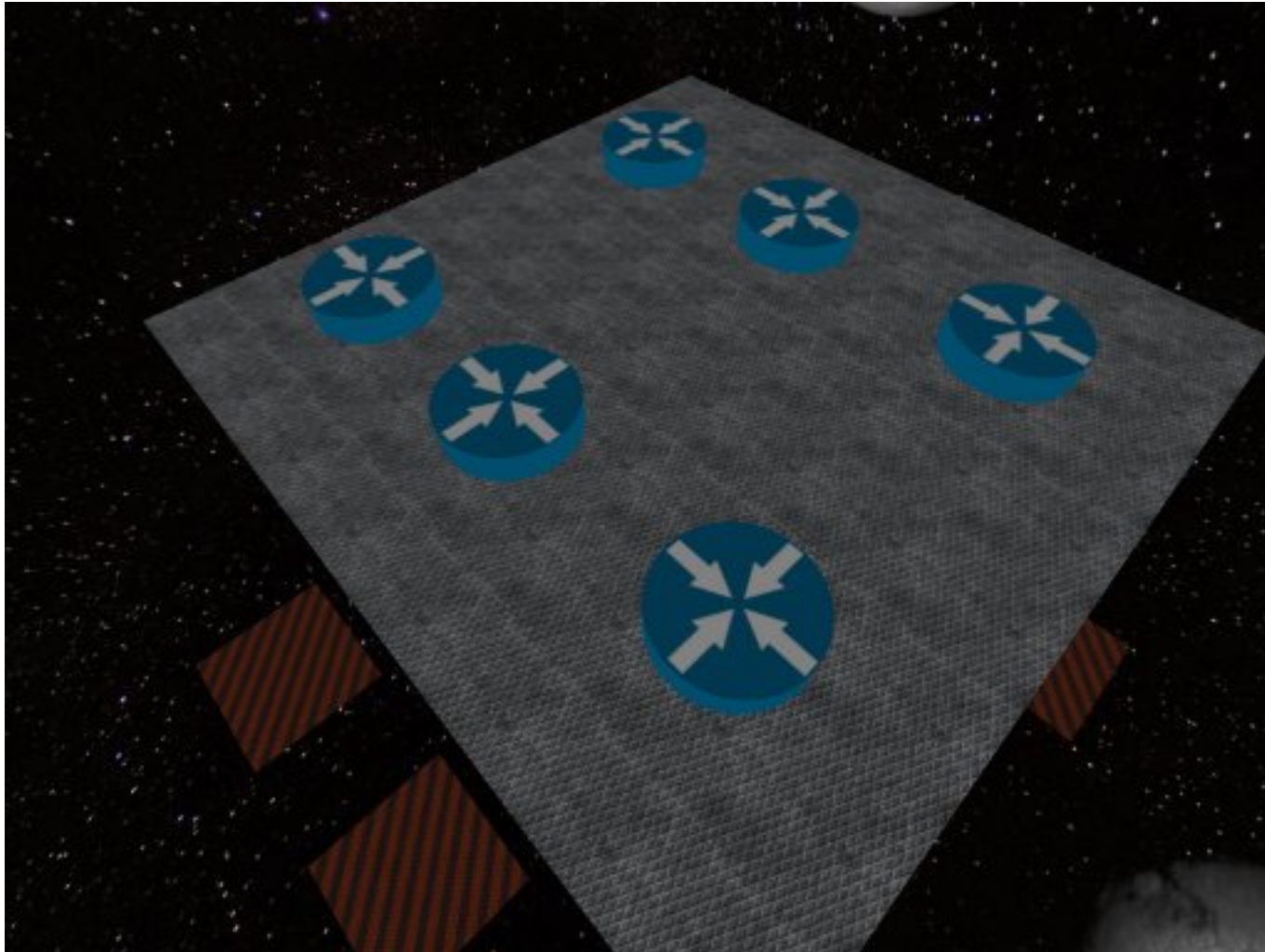


Figure 6: Expanding site B to find a problem in Rack C



psDoom



L3DGEWorld

# BBLISA, You're Our Only Hope

- Distributed apps
- Systems/web services
- Cloudcuckooland (Cloud computing)
- Virtualization
- Ubiquity

